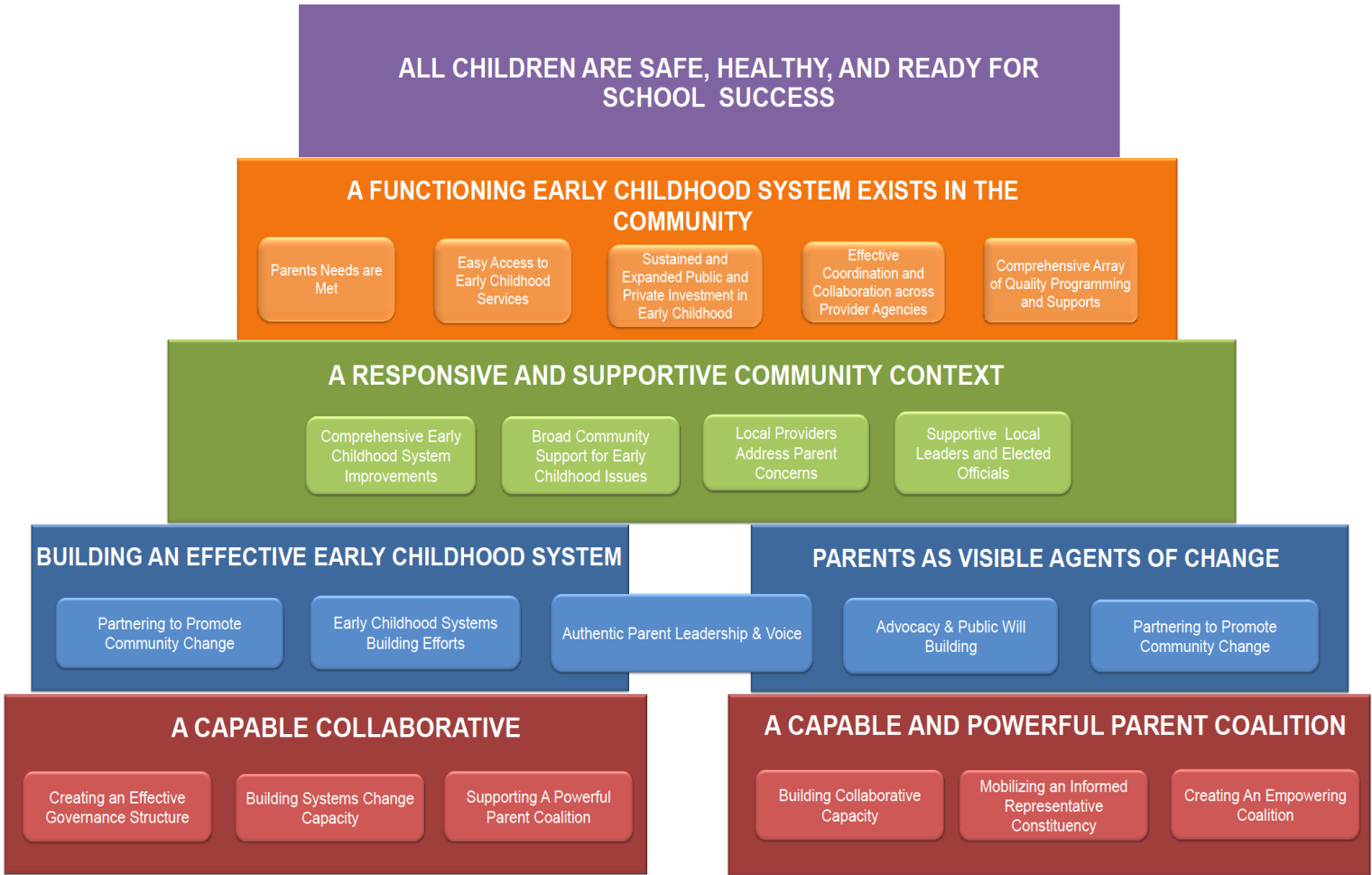


Integrated Great Start Collaborative & Parent Coalition Framework for Change



Great Start Collaborative

Great Start Parent Coalition

GOAL

GSC

**ALL CHILDREN ARE SAFE, HEALTHY,
AND READY FOR SCHOOL SUCCESS**

GSPC

IMPACTS

Parents Needs are Met

- Parents report service providers are meeting their needs

Increased Access to Early Childhood Services

- Easy access to cross-agency services
- Reduced waiting lists
- Services available where and when children and families can access them
- Services have been expanded

Sustained and Expanded Public and Private Investment in Early Childhood

- More private and public funds are leveraged to support early childhood programs, supports, and services
- Fund plans implemented

Increased Coordination and Collaboration across Provider Agencies

Collaboration

- Organizations are more aware of each others programs, strengths, limitations
- Organizations trust each other more
- Increased Service Coordination
- Shared practices, procedures and forms
- Shared data systems
- Cross system training
- Extensive referral, information and resource exchange Network
- Organizations refer to one another more
- Organizations share information with one another more
- Funds and other resources are blended and flexible

Expanded Array of Quality Programming and Supports

- There are new or expanded programs and services for young children and their families

GSC

IMPROVED AND EXPANDED EARLY CHILDHOOD SYSTEM

Increased Access to Early Childhood Services

- Easy access to cross-agency services
- Reduced waiting lists
- Services available where and when children and families can access them
- Services have been expanded

Sustained and Expanded Public and Private Investment in Early Childhood

- More private and public funds are leveraged to support early childhood programs, supports, and services
- Fund plans implemented development

Increased Coordination and Collaboration across Provider Agencies

Collaboration

- Organizations are more aware of each others programs, strengths, limitations
- Organizations trust each other more
- Increased Service Coordination
- Shared practices, procedures and forms
- Shared data systems
- Cross system training
- Extensive referral, information and resource exchange Network
- Organizations refer to one another more
- Organizations share information with one another more
- Funds and other resources are blended and flexible

Expanded Array of Quality Programming and Supports

- There are new or expanded programs and services for young children and their families

GSPC

IMPROVED AND EXPANDED EARLY CHILDHOOD SYSTEM

OUTCOMES

Comprehensive Early Childhood Systems Improvements

- Service quality is improving
 - More early childhood programs are evidenced- based and culturally competent
- Early childhood workforce skills and knowledge are improving
- Organizations making shifts in policies, procedures and practices

Broad Community Support for Early Childhood Issues

- The Community supports early childhood issues (inc. business, faith, philanthropic, public orgs, private orgs., etc.)
- Community residents recognize and prioritize Early Childhood issues
- Local media communicates importance of Early Childhood
- Elected officials are more supportive of Early Childhood issues

Local Providers Address Parent Concerns

- Local service agencies shift programs and practices to address parent concerns and needs
- Local service agencies seek parent input in planning and service design processes

Supportive Local Leaders and Political Candidates

- Candidates & local elected officials support and prioritize early childhood agenda
- Local leaders and elected officials support early childhood system building work and early childhood investments.

GSC

A RESPONSIVE AND SUPPORTIVE COMMUNITY CONTEXT

Broad Community Support for Early Childhood Issues

- The Community supports early childhood issues (inc. business, faith, philanthropic, public orgs, private orgs., etc.)
- Community residents recognize and prioritize Early Childhood issues
- Local media communicates importance of Early Childhood
- Elected officials are more supportive of Early Childhood issues

Local Providers Address Parent Concerns

- Local service agencies shift programs and practices to address parent concerns and needs
- Local service agencies seek parent input in planning and service design processes

Supportive Local Leaders and Political Candidates

- Candidates & local elected officials support and prioritize early childhood agenda
- Local leaders and elected officials support early childhood system building work and early childhood investments.

GSPC

A RESPONSIVE AND SUPPORTIVE COMMUNITY CONTEXT

CHANGE STRATEGIES

GSC BUILDING AN EFFECTIVE EARLY CHILDHOOD SYSTEM

Partnering to Promote Community Change

Strong Partnership with GSPC

- GSPC efforts informed by and support strategic goals and systems change efforts of GSC
- GSC and GSPC collaborate together to lead change within the community
- GSPC and GSC provide each other with feedback on their efforts

Partnerships with other Change Efforts

- GSC has the most important community leaders/organizations at the table
- Other initiatives and collaboratives support GSC efforts
- GSC collaborates with other initiatives and collaboratives on their change efforts

Valued GSC

- GSC is valued within the community

Early Childhood Systems Building Efforts

Improvements in Quality of Services and Supports

- Providers value & adopt evidence-based practices and programming
- Workforce trained in evidence-based and culturally competent practices
- Workforce trained in coordination and service integration strategies

Service Coordination and Integration Pursued

- Processes for implementing shared assessment and referral processes are explored
- Processes for implementing shared consent are pursued
- Processes for integrating resources are pursued

Barriers Targeted

- Needs for new programs or program slots prioritized
- Issues concerning location and time of services targeted
- Issues concerning barriers to entry into services understood
- Policy and procedure change efforts

Authentic Parent Leadership & Voice

Strong Parent Leadership

- Parents are recognized as strong and effective leaders

Parent Voice is Valued

- Parents influence decisions made by the GSC and service and support organizations
- Parents are listened to by the broader community

Parent Activity and Voice

- Parents are more active in the early childhood system building process
- Parents are more effective at getting their voices heard

GSPC PARENTS AS VISIBLE AGENTS OF CHANGE

Partnering to Promote Community Change

Strong Partnership with GSC

- GSPC efforts informed by and support strategic goals and systems change efforts of GSC
- GSC and GSPC collaborate together to lead change within the community
- GSPC and GSC provide each other with feedback on their efforts

Partnerships with other Advocacy and Change Efforts

- GSPC collaborates with other advocates on their change efforts

Advocacy & Public Will Building

Effective Communications Campaign

- Great Start messaging widely distributed
- Diverse stakeholders targeted in education campaign

Broad Scale Advocacy Efforts

- Diverse stakeholders targeted in systems and budget advocacy efforts
- Broad constituency, including parents, engaged in advocacy efforts

Authentic Parent Leadership & Voice

Strong Parent Leadership

- Parents are recognized as strong and effective leaders

Parent Voice is Valued

- Parents influence decisions made by the GSC and service and support organizations
- Parents are listened to by the broader community

Parent Activity and Voice

- Parents are more active in the early childhood system building process
- Parents are more effective at getting their voices heard

Valued GSPC

- GSPC is valued within the community

CAPACITY BUILDING

Creating an Effective Governance Structure

Effective Internal Governance

Operations

- Shared Vision and Goals
- Strong instrumental leadership
- Shared decision-making

Formal Operations

- Quality strategic plan that addresses local needs
- Formalized internal operations
- Strategic plan implemented
- Effective member recruitment, orientation, training, and retention processes

Inclusive Environment

- Welcoming, inclusive climate
- Creating ways for parents to make meaningful contributions

Effective Parent Engagement and Voice

- Strong Parent Liaison
- Strong Parent Members
 - Active parent volunteers
- Active, representative membership base
 - Participation Benefits maximized
 - Participation Barriers reduced

Building Systems Change Capacity

Understands How Systems Change

- Understand local early childhood system
- Understand GSC's role in systems change
- Knows what and how to change in the local early childhood system
- Knows how to increase investments in early childhood
- Knows how to increase public knowledge and awareness of early childhood issues

Readiness for Change

- Stakeholder Readiness
 - Belief that change is desirable
 - Belief that change is feasible/possible
 - Belief that community has the capacity/ability to change
- Organizational Readiness
 - Belief that organizations have the capacity to change
 - Belief in the necessity for change

Supporting a Powerful Parent Coalition

GSC Support for GSPC

- Supports the development and mobilization of an active parent constituency
- Supports the development of authentic parent leadership and voice
- Effectively partners with the GSPC

GSC
A CAPABLE COLLABORATIVE

Building Collaborative Capacity

Effective Internal Governance

Operations

- Shared Vision and Goals
- Strong instrumental leadership
- Shared decision-making

Formal Operations

- Quality strategic plan that addresses local needs
- Formalized internal operations
- Strategic plan implemented
- Effective member recruitment, orientation, training, and retention processes

Inclusive Environment

- Welcoming, inclusive climate
- Creating ways for parents to make meaningful contributions

Mobilizing an Informed, Representative Constituency

Parent Mobilization

- GSPC can mobilize parents for action
- GSPC promotes authentic parent voice and leadership
- GSPC effectively partners with the GSC

Informed Constituents

- Parents understand advocacy and public will building process

Engaged Constituents

- Active, diverse, representative base of parent advocates
- Connection to large parent constituency

Creating An Empowering Coalition

Involvement on GSPC

- Attends GSPC meetings and events
- Communicates concerns about early childhood to elected officials and political candidates
- Advocates for agency/organization policy and procedure changes
- Talks with other parents about early childhood issues

Active, representative membership base

- Participation Benefits maximized
- Participation Barriers reduced

GSPC
A CAPABLE AND POWERFUL PARENT COALITION